

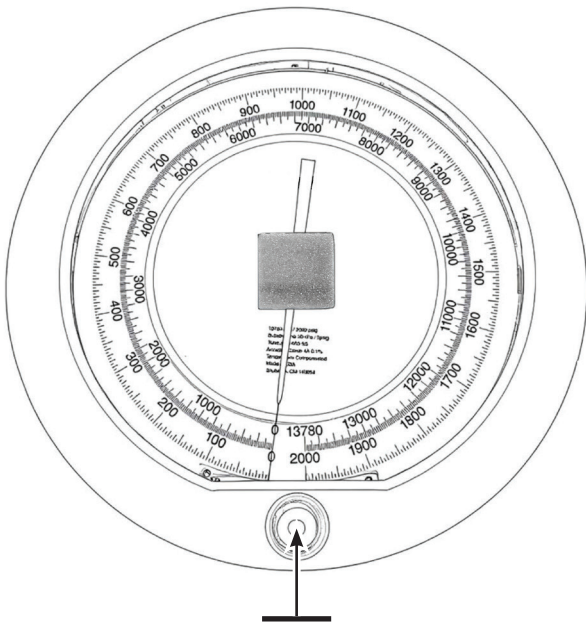
## IMPORTANT SET-UP INSTRUCTIONS

### Must Be Performed Prior to Installation and Operation of this Gauge

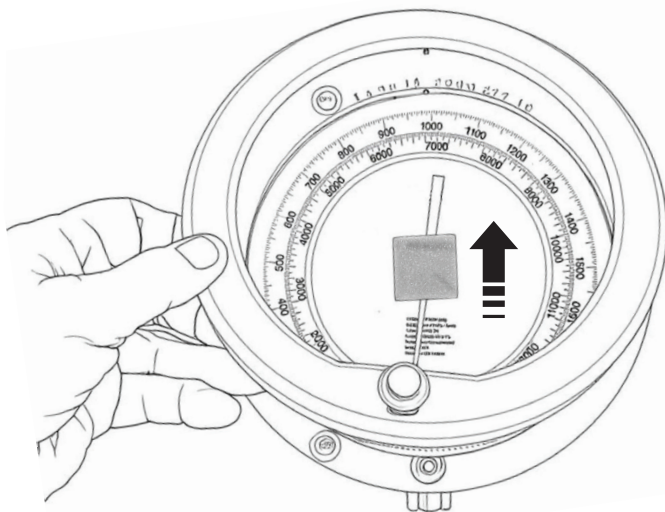
To protect the movement of this gauge from damage during shipping, special cushioning has been placed in several locations. This material must be removed prior to installation and operation of the gauge.

#### TO REMOVE THE FOAM PAD UNDER THE WINDOW

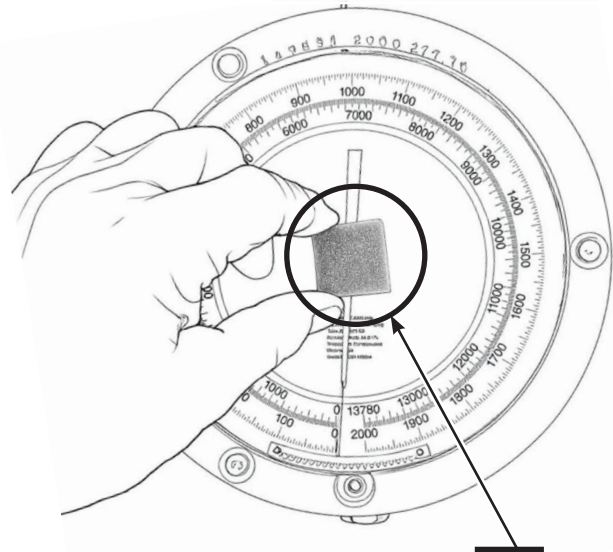
A foam pad has been installed on the gauge pointer hub to secure the pointer motion during shipment.



- 1) **Remove** the knurled “bezel hold-down” screw located at 6:00 on the front bezel, running through the zero adjust knob.



- 2) **Grab** the bezel at the 6:00 position and lift it up a few inches. Then push the bezel toward 12:00 to slide it off of the top pin.



- 3) **With** the bezel removed, carefully lift the foam pad off of the pointer hub.

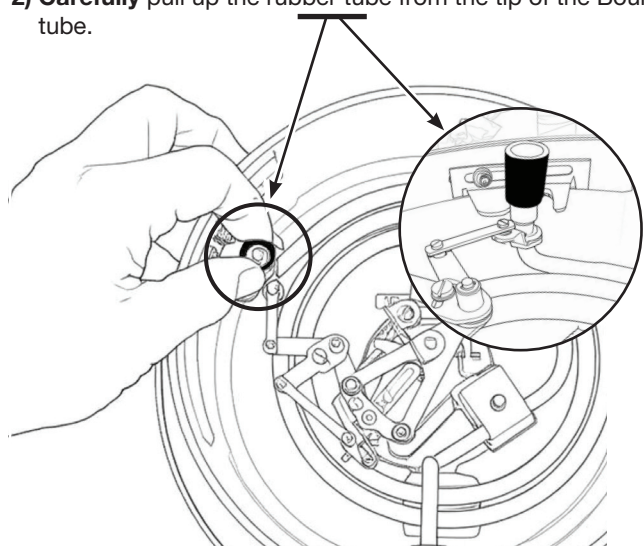
- 4) **Replace** the bezel using the opposite procedure. You may have to slightly rotate the zero adjust knob on the bezel to allow the gear teeth to properly mesh with the teeth on the gear rack so that the bezel will seat.

#### TO REMOVE THE RUBBER TUBE ON THE BOURDON TUBE TIP

A section of rubber tube has been placed over the Bourdon tube bleeder tip to stabilize the motion of the tube between the high and low stops.

##### To remove the tube:

- 1) **Remove** the back cover from the gauge by unscrewing the knurled center mounting screw.
- 2) **Carefully** pull up the rubber tube from the tip of the Bourdon tube.



- 3) **Replace** the back cover.

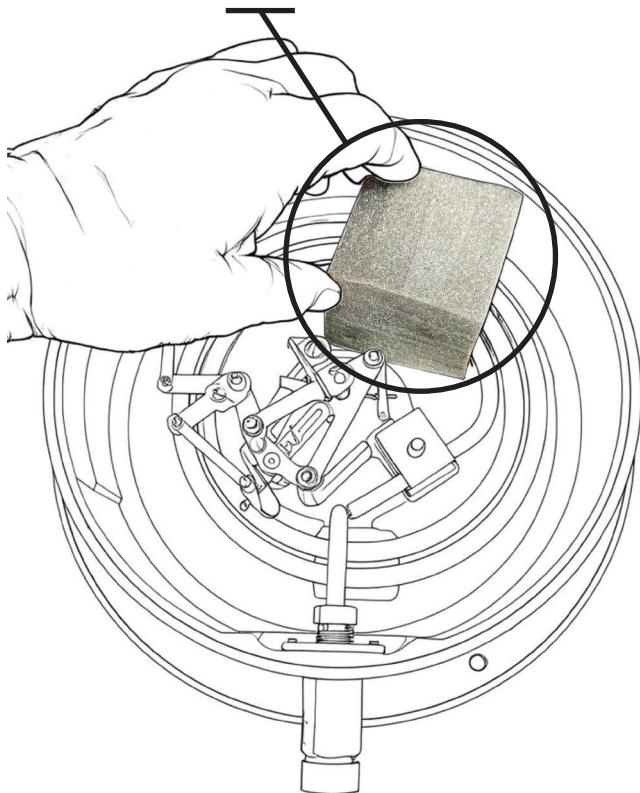
## Important Unpacking Instructions for Heise Pressure Gauges



### TO REMOVE THE FOAM BLOCK SURROUNDING THE BOURDON TUBE (High pressure gauges only)

All gauges 30,000 psi or greater that are equipped with triple-coil spiral Bourdon tubes include a foam block to stabilize the tube during shipment.

- 1) **Remove** the back cover from the gauge by unscrewing the knurled center mounting screw.
- 2) **Carefully** pull the foam block from around the Bourdon tube.



- 3) **Replace** the back cover.